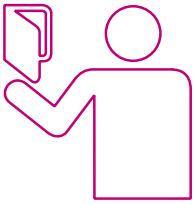


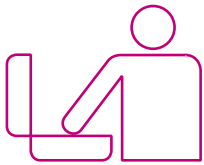
HOW TO APPLY TO ITS#PHOTO

Step 1:



Read. Read these instructions from beginning to end. Then read the ITS#PHOTO Entry Requirements very carefully, article by article. The ITS#PHOTO Entry Requirements are pages 3 to 7 of this PDF

Step 2:



Prepare your portfolio. See Article 6 of the Entry Requirements for full details.

Tips:

- Make sure that your project adheres to the brief, “Uniqueness is...”. Make sure to include your valid explanation of the theme “Uniqueness is...” . Portfolios not following the brief will not be considered for ITS#PHOTO!

To illustrate this idea you must include:

- The **CONCEPT**: a written comment no longer than $\frac{3}{4}$ page describing the idea behind your project (that means an individual interpretation of the project brief, upon which the project is based).
- The **TITLE** of project: a short definition which consists of completing the phrase “UNIQUE-NESS IS ...” and describing the **CONCEPT**. This means that project will be presented to the public and press together with this short definition, and thus the two will be unequivocally associated. Titles must be very effective in order to outline the **CONCEPT** to the viewer at first glance. Applicants are asked to take in care in choosing the **TITLE**, as it must fit the project, and its consistency will be considered as an index of adherence to the project brief (which is a basic requirement for admission in ITS#PHOTO).
- Make sure the portfolio is complete! Remember to include a separate portfolio of past photographic work. EVE reserves the right to deny participation of any incomplete portfolios.

Step 3:



Pre-register online. Make sure to pre-register only and after having read all of this PDF, and when your portfolio is complete, and ready to be mailed.

Go to this link to pre-register online: www.itsweb.org/preregister

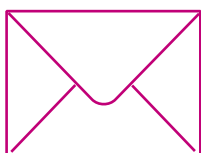
You must also upload 1 photo from your ITS#PHOTO project. If you have problems pre-registering online or uploading your photograph, call the office +39 040 322 0932. Once you have successfully pre-registered, you must print out the entry form, following the computer prompts. These are now the first pages of your portfolio.

Signature _____

Tips:

- Choose a reliable computer that is attached to a printer.
- If you are entering as a team of two people, you must be together to do the pre-registration. The first person will enter their personal information, and then directly after, the second person.
- Be careful when typing in the information, and reread all answers before submitting the entry form.
- When uploading photograph (to be taken from your ITS#PHOTO entry project), be sure that it is low-resolution, max 500K
- Upon completion of pre-registration, your computer will print out 3 different things:
 1. your entry form
 2. a CD label to be put together with your CD or DVD
 3. a label with our address to be pasted (with glue or cello tape) to the envelope containing all enrollment material

Step 4:



Post your portfolio. On the external envelope, be sure to use the aforementioned address label. All portfolios must arrive in EVE offices by and no later than 24th March, 2007.

Tips:

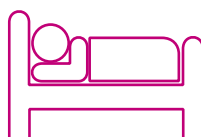
- Remember to send everything! Including labelled CD's/DVD's, and passport-sized photos.
- If required to give a description, write that the package contains documents only, and be sure to declare a value of less than € 25 to avoid customs fees. EVE will not pay for any packages that require payment upon receipt, they will returned to sender. You don't want that to happen! If you are sending your portfolio from outside the European Union, please find out ahead of time if you are subject to pay customs fees and be sure to pay them.
- Remember to use the address label printed off by your computer.

Step 5:



Wait...

When your portfolio arrives and has been processed in our computer database, you will receive an automatic notification e-mail.



And wait...

The pre-selections will take place in late April. The results of the pre-selections will be promptly published on our website, and all finalists will be contacted personally by EVE.

Signature _____

ENTRY REQUIREMENTS

ITS#PHOTO



Art. 1 – INTERNATIONAL TALENT SUPPORT

International Talent Support (ITS) is a platform for young creatives which holds an annual event, ITS#SIX being the sixth edition. ITS#PHOTO is one of the areas of creativity.

Art. 2 – ITS#PHOTO at ITS#SIX

ITS#PHOTO is an international contest. The work of the finalists chosen for this photography contest will be showcased in a collective exhibition during the ITS#SIX Finals, and prizes will be assigned to winners.

Art. 3 – ORGANISATION

The organisation of ITS#PHOTO will be handled exclusively by EVE. The organiser reserves the right to rule on any issues not covered by the Entry Requirements.

Art. 4 – ELIGIBILITY

ITS#PHOTO is open to the following categories:

- **College students** in their **last year of a Photography course (BA or MA)**, who will graduate in 2007 in Photography
- **Photography graduates**, who received their diploma in 2002 or later
- **Young talents** not in possession of a degree in Photography, **who work professionally as photographers**

Art. 5 – PROJECT BRIEF

“UNIQUENESS IS ...”

What is uniqueness? Give us your vision of uniqueness, focusing on what makes something unique, what distinguishes itself as different.

Art. 6 - ENTRIES

EVE assumes that all entries are original and are the works and property of the entrant, with all rights granted therein. EVE is not liable for any copyright infringement on the part of the entrant. EVE assumes that all images provided with entries are free of copyright infringement and violation of privacy laws.

- **It is necessary to first complete an online registration form** found on the ITS#SIX website, **www.itsweb.org**, Having submitted the entry form online, contestants must print out the copy, sign it and, together with all the materials, post it to EVE srl as specified. **No entry will be considered without having first pre-registered online.** All information concerning pre-registration and help on how to enter can be found on the same website. If you have difficulty or are not able to pre-register online, please contact the Schools and Contestants Office at +39 040 322 0932.

Signature _____

Contestants may enter one collection in a team of **maximum two people**. PLEASE NOTE, that teams of 2 must pre-register online together, but each contestant must fill out their own form. Teams must follow computer prompts for online registration.

All the material must be accurately gathered in a single portfolio in the following order:

- a) the ITS#PHOTO **entry form, signed and fully completed**. In the absence of an entry form participation will be denied.
- b) these ITS#PHOTO entry requirements, signed on each page.
- c) a detailed C.V. (typed in English).
- d) two personal passport size photographs, one must be attached to the entry form the other must be put in an envelope.
- e) One printed version of each of all enrolled images on any type of photographic paper. Projects can contain a minimum of 12 photos and a maximum of 15.
Maximum measurements: 21x29 cm, and can be printed either as a landscape (horizontally) or as a portrait (vertically), as well as other formats (ex. Square) providing they are within the maximum measurements specified above. Please indicate the correct orientation for viewing on the back of the print. **This print will also be used as color reference.**
- f) The CONCEPT: a written comment no longer than ¾ page describing the idea behind your project (that means an individual interpretation of the project brief, upon which the project is based).
- g) The TITLE of project: a short definition which consists of completing the phrase “UNIQUENESS IS ...” and describing the CONCEPT. This means that project will be presented to the public and press together with this short definition, and thus the two will be unequivocally associated. Titles must be very effective in order to outline the CONCEPT to the viewer at first glance. Applicants are asked to take in care in choosing the TITLE, as it must fit the project, and its consistency will be considered as an index of adherence to the project brief (which is a basic requirement for admission in ITS#PHOTO).
- h) a CD or DVD containing a portfolio of past work, not related to the ITS#PHOTO entry project.
- i) **A CD or DVD (or more than one) containing the enrolled images saved in the following formats:**
 - l) **a *slideshow presentation*** of photographs enrolled that is compatible for Apple and PC, or two separate presentations, one for Apple and one for PC.
 - ll) ***all photographs saved individually*** with the following specifications:
 - Must be saved in high-resolution, minimum pixels 6000 for the larger side of the image.
 - Files must be named sequentially so that we can understand the correct sequence the images are meant to be displayed.
 - If the file was corrected in photoshop, flatten the image if any correction or alpha levels was used to improve the image quality.

Signature _____

- The extensions accepted are: .JPG, .TIFF, .PSD (with one level).
 - Please DO NOT EMBED color profiles: for the final color of the printed images, the prints mentioned above will be taken as color proof. All the images can be digitally changed, but the organisers will prefer manipulation that does not change the nature of the shot.
- III) **web preview** file for each presented work, saved in jpg file extension with minimum pixels 1280 for the larger side of the image. The single file size must not exceed 1MB.

The enrolling material must reach EVE offices by and no later than 24th March, 2007 and will not be returned for any reason.

Art. 7 – PROJECTS ENTERED

Submissions remain the property of the entrants. However, by entering, all entrants agree to permit EVE and MINI to use their entries for advertising/marketing/communication materials in perpetuity and for any and all purposes. Entrants also agree to the use of their names and likenesses for purposes of advertising, trade show use and promotion without additional compensation, unless prohibited by law. Furthermore, contestants agree to give sole advertising rights to EVE and MINI and cannot sell or receive monetary payment from any third party for the use or likeness of the project enrolled in ITS#PHOTO, ITS#SIX.

The projects enrolled in ITS#PHOTO must not be enrolled in other contests or awards in 2007. Should the organisers discover that the projects enrolled in ITS#PHOTO have been enrolled in other contests EVE reserves the right to disqualify the contestant immediately.

Art. 8 - ENTRY SHIPMENT

To avoid any customs problems, it is important to specify that the contents of the package are **documents**. If a courier service or priority post is used, or if entrant wishes to insure contents of package, it is recommended to declare a value of **less than 25 Euros** in order to avoid possible customs fees. **The sender must declare responsibility for any customs fee. EVE cannot accept packages subject to payment upon receipt, and will be forced to refuse any shipment of this nature.**

Art. 9 – SELECTIONS

In **April** a jury will examine all the material sent. Names of all selected finalists will be promptly published on the ITS#SIX website – www.itsweb.org.

Selected candidates will be invited to participate in the ITS#SIX Finals. Only selected applicants will receive a written letter informing them of the selection results by post (no answer will be given over the phone) and they will be sent a detailed programme, and information regarding their stay in Trieste for the finals.
Any variations concerning addresses and/or telephone numbers must be communicated to EVE promptly.

Signature _____

Art. 10 – JURY AND PRIZES

Jurors' names will be communicated through the ITS#SIX web site – www.itsweb.org

Theme affinity is a mandatory requisite to be considered for entry in ITS#PHOTO. Judging criteria will take into account **creativity** and **technical skills**.

- Prizes to be won:

MINI International Award - consisting of the following:

- € 10.000 prize money plus: Winner will be hired by MINI for the production of a photo shoot of either city-scapes or people on the street which will be published on three double-pages on one of the MINI International magazines. Transport and accommodations will be covered by MINI, winner will be featured with picture, name and contact info.
- Winner's picture will be exposed on the MINI international webpage. Winner will be featured with picture, name and contact info.

Pitti Immagine Photo Award - 2 winners will have to create the campaigns for Womenswear Fairs that Pitti organises in Milan

Art. 11 – ACCOMMODATION EXPENSES

EVE will pay accommodation expenses for all finalists, according to the ITS#PHOTO programme. Participants will have to pay for any other expenses personally.

Art. 12 – ARRIVAL AND DEPARTURE

Finalists are required to arrive in Trieste on Friday 13th July 2007 by 15.00, and will stay till Sunday 15th July, 2007.

Art. 13 – PARTICIPATION

If selected as a finalist for ITS#SIX, contestants are required to carry out all further paperwork and other obligations in a timely manner. Finalists will be sent a compulsory programme after being selected. If they cannot follow this programme due to physical, religious or any other restrictions this must be communicated to EVE immediately upon receipt of said programme. If for any reason any finalist cannot physically attend all the days of the finals, they are obliged to send their project and are still in competition. Moreover, contestants are hereby advised that after 24th March 2007 no finalist will be allowed to withdraw their project from competition entered in ITS#SIX.

Art. 14 – EXHIBITION

The art direction of all exhibitions during the ITS#SIX Finals is of complete responsibility of EVE. Five photographs from each finalist will be selected for the exhibition. Finalists must develop their own photographs for the ITS#SIX exhibition. The exact dimensions and selection of the five photographs to be printed will be communicated to all finalists after pre-selections. All photographs must arrive by and no later than 15th June 2006. EVE reserves the right to reprint any photographs deemed in need. The ITS#SIX exhibition will contain a maximum of five photographs from each finalist. The exhibition photographs will become property of EVE.

Signature _____

Art. 15 – ACCEPTANCE OF CONDITIONS OF PRIVACY LAWS

Signing these entry requirements and ITS#PHOTO entry form warrants that applicant has read the written information included on the ITS#PHOTO entry form on the treatment of personal and relevant data according to Italian law, D. Lgs. N. 196/2003, and is in accordance with this decree.

Art. 16 – ACCEPTANCE OF THE REGULATIONS

Signing these entry requirements and ITS#PHOTO entry form warrants applicant's complete comprehension, respect and acceptance of all rules, regulations and deadlines and does not guarantee participation in the ITS#SIX event.

Name, Surname _____
(all CAPITAL LETTERS)

Signature _____

Date _____

For further details contact:
Rachel De Vito
EVE Srl
Schools and Contestants Office
Piazza Venezia, 1 - 34123 Italy
tel. 0039 040 3220932
e-mail: schools-contestants@itsweb.org
web: www.itsweb.org